

WHEN ELECTRICITY KILLS...

by Donna Fisher
Copyright (c) D. Fisher 2008

People are being killed and others becoming very sick as clusters of cancer appear in Australia and many other parts of the world caused by Electromagnetic Radiation – Silent Fields in small lethal doses. It is hard to believe that the common use of electricity an integral part of our lives can kill. It need not be so. Electricity must be tested for when it becomes “dirty”. The growing cancer cluster cover-up may well become the biggest cover-up since the cigarette companies spent billions to deny that smoking was linked to cancer.

The breast cancer clusters at the ABC TV studios, the Concord Hospital in Sydney, the Women’s Hospital in Adelaide, the brain tumour cluster at the RMIT University and more cancer clusters in our workplaces and schools compelled Donna to explain why these are occurring in Australia and worldwide in her new book ‘Silent Fields - The Growing Cancer Cluster Story’. Breast cancer in men which is normally rare is also occurring in clusters in workplaces around the world.

INTRODUCTION

This issue is bigger than the smoking issue – not all people smoke and it is by choice. This issue is bigger than the asbestos issue – not all people have been exposed to asbestos. This issue has the potential to dwarf both issues.

We are all exposed to electricity and we are paying for it. This public health issue caused Dr Robert O Becker (twice nominated for a Nobel Prize in regard to these fields) to state in 1990 that it is quite possible that chronic exposure to these fields is a competent cause for the origin of cancers which was compatible with statistical data. Dr Becker believed these fields to be more of a threat than global warming.



Dr Robert O Becker

It may be that 80% of childhood leukaemia is caused by exposure to these silent fields.



Concord hospital, Sydney, Australia

Miscarriage and deformities in children are also effects associated with these fields. The Russians have been protecting their citizens since the 1950s, the Swedish Government since the 1990s. Australia is severely lagging behind.

The childhood leukemia link was discovered by western scientists in 1979, the adult leukemia link, the brain tumour link and the breast cancer link in 1982. There is still great resistance to acknowledge the risks.

This book is a tool for parents, parents to-be, anyone fighting the power and telecommunications industry whether it is the people, lawyers or unions. Our

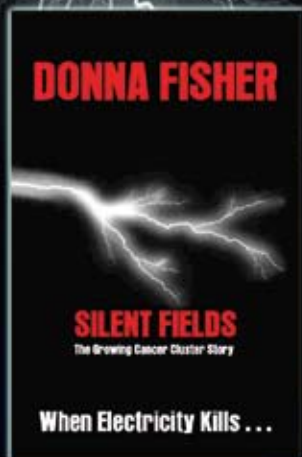
doctors and nurses need also to be educated on this. It should be required reading included in school curriculum. It is not just people concerned with the close location of powerlines, sub-stations and communications antennas that should be made aware. These fields can also be affecting us in our homes, workplaces, schools and hospitals. Lessening exposure to these fields is now reasonable and warranted according to the World Health Organisation.

SUMMARY

This story is about a battle between a small group of people in an urban street and a power company about the location of a proposed sub-station and up-graded

SILENT FIELDS

"The Growing Cancer Cluster Story"



Price : **\$32.95**
plus postage & Handling

**"Electricity under certain circumstances can Kill
It can make people very sick - And bring on
terminal cancer"**

by DONNA FISHER

They said she was on the
WRONG TRACK

They put her down...belittled her...
They tried to silence her.

A politician said "Go back to your
kitchen!"

Yet others stone-walled her but
they could not stop her!

She fought long and hard overcoming
all obstacles and took on a
multi-national company and beat this
mighty giant at its own game in a
LANDMARK court case to the benefit of
all Australian's!

Donna Fisher with fierce
determination set out to
prove her case and then
with a sense of justice
and compassion
to get out the message
to the WORLD



World Health Organisation logo

powerlines near their houses. This group with limited understanding of the technical and scientific language took on the electrical utility which resulted in a landmark world-first achievement.

This book explains in simple layman's terms what it is about powerlines and substations that we have all been uneasy about. We all need to understand this emerging language. This controversial and educational book which has seven exposes within its pages covers the 10-day court case which reads like a movie script, the history in condensed form and the latest validating research on the most important health issue of our times.

Everyone needs to read this expose' on the power industry to be able to protect themselves.

The following are excerpts taken from Donna Fisher's newly released book 'Silent Fields - The Growing Cancer Cluster Story'.



THE BIOINITIATIVE REPORT

The BioInitiative Report was released on August 31 2007. This **scientific review** of more than 2000 studies produced by



Typical example of a substation

an international working group of world-leading and widely respected scientists, researchers and public health policy professionals - concludes that there are many biological effects at levels that are well below current limits and that the existing safety limits are inadequate to protect public health.

The BioInitiative Report states "it appears it is the **INFORMATION** conveyed by electromagnetic radiation (rather than heat) that causes biological changes – some of these biological changes may lead to loss of wellbeing, disease and even death".

The BioInitiative Report clearly states: **"the scientific evidence is sufficient to warrant regulatory action for ELF; and it is substantial enough to warrant preventative actions for RF"**.

Conclusions in The BioInitiative Report include:

ELF EMF

- there is little doubt that exposure to ELF causes childhood leukemia.
- there is some evidence that other childhood cancers may be related to ELF exposure but not enough studies have been done.
- children who have leukemia and are in recovery have poorer survival rates if their ELF exposure at home (or where they are recovering) is between 1mG and 2mG in one study; over 3mG in another study.
- studies of human breast cancer cells and some animal studies show that ELF is likely to be a risk factor for

breast cancer. There is supporting evidence for a link between breast cancer and exposure to ELF that comes from cell and animal studies, as well as studies of human breast cancers.

- alzheimer's disease is a disease of the nervous system. There is strong evidence that long-term exposure to ELF is a risk factor for Alzheimer's disease.
- oxidative stress through the action of free radical damage to DNA is a plausible biological mechanism for cancer and diseases that involve damage from ELF to the central nervous system.

RF EMF

- there is little doubt that electromagnetic fields emitted by cell phones and cordless phones use affect electrical activity in the brain.
- people who have used a cell phone for ten years or more have higher rates of malignant brain tumor and acoustic neuromas. It is worse if the cell phone has been used primarily on one side of the head.
- people who have used a cordless phone for ten years or more have higher rates of malignant brain tumor an acoustic neuromas. It is worse if the cordless phone has been used primarily on one side of the head.

ELF EMF AND RF EMF

- both ELF and RF exposure can be considered genotoxic (will damage DNA) under certain conditions of exposure including exposure levels

that are lower than existing safety limits.

- very low level ELF and RF exposures can cause cells to produce stress proteins, meaning that the cell recognizes ELF and RF exposures as harmful.
- there is substantial evidence that ELF and RF can cause inflammatory reactions, allergy reactions and change normal immune function at levels allowed by current public safety standards.
- medical conditions are successfully treated using EMFs at levels below current public safety standards, proving another way that the body recognises and corresponds to low-intensity EMF signals. Otherwise, these medical treatments could not work. The FDA has approved EMFs medical treatment devices so is clearly aware of this paradox.

The BioInitiative Report recommends that new ELF limits are warranted based on a public health analysis of the overall existing scientific evidence.

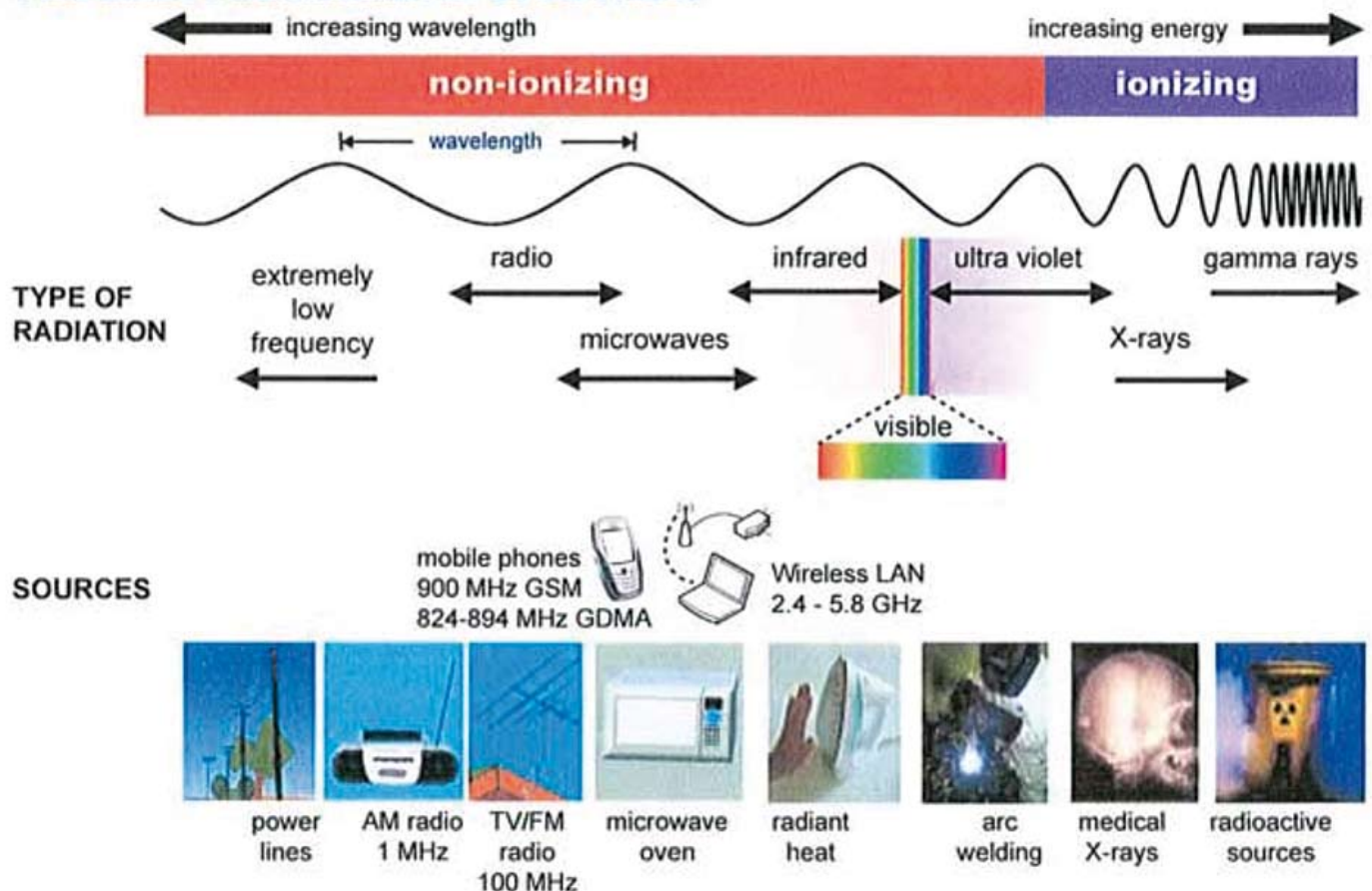
Also included in the BioInitiative working group's report are recommendations:

- that it is no longer acceptable to build new power lines and electrical facilities that place people in ELF environments that have been determined to be risky - these levels are in the 2 to 4mG range.
- while new ELF limits are being developed and implemented, a reasonable approach would be a **1mG** planning limit for habitable space adjacent to all new or upgraded power lines and a **2mG** limit for all other new construction.
- the occupation of seamstress deserves attention in future studies as seamstresses are in fact one of the most highly MF exposed occupations with exposure levels generally above 10mG (1.0μT) over a significant proportion of the workday. They also have been consistently found to be at higher risk of Alzheimer's disease and (female) breast cancer.

This next recommendation is based on the assumption that "a higher burden of protection is required for children who cannot protect themselves, and who are at risk for childhood leukaemia at rates that are traditionally high enough to trigger regulatory action":

- a 1mG limit be established for existing

THE ELECTROMAGNETIC SPECTRUM



habitable space for children and/or women who are pregnant (because of the possible link between childhood leukemia and in utero exposure to ELF).

The BioInitiative Report brings attention to the fact that "traditional public health and epidemiological determinations do not require a proven mechanism before inferring a causal link between EMFs exposure and disease". "Plausible biological mechanisms are already identified that can reasonably account for most biological effects reported for exposure to RF and ELF at low-intensity levels ..."

The European Environmental Agency endorses The BioInitiative Report.

The Breast Cancer Fund - USA - supports The BioInitiative Report statement that the scientific evidence is sufficient to warrant regulatory action for ELF EMF and is substantial enough to warrant preventive actions for RF. The Breast Cancer Fund - USA - also states that based on the scientific evidence set forth in The BioInitiative Report and a growing body of additional research, exposure limits for electromagnetic radiation should be set at the federal level.

Their recent publication State of the Evidence 2008 available on www.bioinitiative.org

breastcancerfund.org includes information on non-ionising radiation and EMFs.

For a more in-depth condensed summary of the EMR issue, its history, studies and areas recommended for future study refer to The BioInitiative Report: *A Rationale for a Biologically-based Public Exposure Standard for Electromagnetic Fields (ELF and RF)* at www.bioinitiative.org

THE BREAST CANCER CLUSTER AT THE ABC TV STUDIOS

In December 2006 the majority of staff left the ABC TV studios in Toowong, Brisbane, Australia after a cancer cluster had been reported. Since 1994, fifteen staff working at this workplace have been diagnosed with breast cancer. In the *Breast Cancer at the ABC Toowong Queensland: Third Progress Report* from the Independent Review and Scientific Investigation Panel dated 21 December 2006, after discounting all other factors (including genetics, lifestyle, and toxic agents) the workplace was acknowledged as the problem. The many experts engaged could not find the problem. No agent could be found to be responsible for the cancer cluster.

Dr Geza Benke, in the ABC report states: "...Ionising radiation is the only known environmental exposure that is known with certainty to increase breast cancer risk".

(Refer Appendix F) Point 3 a. of the ABC report, as stated above, states that there is no documented history of the use of ionising radiation on the site.

The EMC Technologies report B050401 of 2 May 2005, Point 4.3 states: that a specific request had been made by staff to measure the fields next to a cable tray running in a wall near Jo-Anne Youngleson's desk in the newsroom general area. RF EMF field levels were taken as the report focused on radio frequency - RF.

Being a wiring cable tray, the wiring current flow would have been ELF EMF.

Many months later, Dr Geza Benke finally recommended ELF EMF measurements. Dr Benke in Point 3.c page 12 of the *Breast*

Dr Geza Benke





ABC TV studios in Toowong, Brisbane, Australia.

Cancer at the ABC Toowong Queensland: Third Progress Report states:

"ELF exposure has not been measured in the TV building. Given the high concentration of communications equipment in many of the workstations in this building, exposure is expected to be higher than in a normal office environment. The power requirements of the ABC Toowong site are clearly high, given that it has its own substation. Thus the power intensive sources and high power frequency currents required for high ELF exposures are present on the site."

EMC Technologies had previously conducted all other testing of fields (RF EMF) at this site. The Australian Government's ARPANSA, measured the ELF EMF on December 18 2006.

After conducting measurements, Mr Ken Karipidis from ARPANSA in completing his assessment states: "In general these measurements indicate that the levels are lower than what is usually encountered in a normal office environment." Mr Karipidis from ARPANSA reported in the Third Progress Report Page 13, that the measurements were 'averaged': "The average magnetic field was about 1mG".

'Averages' can dilute high measurements in that if one area in the room measured 0mG and another area measured 26mG 'averaging' dilutes the fields where the problem presented.

The ABC TV station where the breast cancer cluster occurred produced a two-

part story on the program the *Australian Story*, which aired in Australia, *part-one* on Monday 12 March 2006 and *part two*, Monday 19 March 2006. In *part two*, Professor Armstrong acknowledged: "There's evidence to suggest in some populations with high shift work that the risk of breast cancer can be up to about two times higher than what it is in the general population. It's certainly nothing like the sixfold increase in risk that we observed on the ABC site". Professor Armstrong stated: "We felt that extremely low frequency electromagnetic energy was a possible issue".

The ARPANSA ELF Report indicates that three ABC volunteers wore data loggers for four hours to determine the practicality of using the EMDEX 11 instruments for this purpose. The ARPANSA ELF Report February 2007 states on page 2, point 2, that **"it is unknown how representative their work patterns (volunteers) were of the women suffering health effects"**. The ARPANSA survey consisted of a two hour walk taking spot measurements around the studios. There is no mention of the measurements of the fields next to a cable tray running in a wall near Jo-Anne Youngleson's desk in the newsroom area being specifically addressed in the ARPANSA February 2007 report. Media reports often referred to 'that particular desk' that concerned staff.

Mr John Lincoln, the community representative on a working group for the ELF standard run by ARPANSA appeared on *part two* of the *Australian Story* program. On commenting on the fact that ARPANSA



only did spot measurements at the ABC, he made the following statement:

"From what I've seen of the ABC testing, I'm not that happy with it because spot testing is not good enough. A minimum of 48 hours is needed for a thorough test and in some cases I would leave a data logger for four or five days. From the results that Dr Armstrong has been given I think I would arrive at the same conclusions he has had. My question is, are they comprehensive enough? Do they really cover the situation?"

(A more recent Japanese study that found high magnetic fields in a bedroom (exposed to 4mG or more) could increase the risk of childhood leukaemia by up to nearly five times. Week long measurements as well as spot measurements were taken. The measurements were also taken close to time of diagnosis). (Kabuto et al 2005).

Interviewed on the Australia programme 'Nine' on August 7 2007 and questioned on this cluster and the frustration of some of the women who felt the proper investigations were not carried out before all the equipment was taken out Professor

Armstrong stated: "It is very important to do the investigations properly and indeed we did have a problem with the ABC with the fairly quick decision to remove people from the site, it did mean that some of the measurements we wanted to do were not complete and I do understand how the women feel in that respect, they don't feel that it's been done satisfactorily..."

Inadequate EMR testing often prevents the association between breast cancer in women and ELF EMF being officially acknowledged as stronger. The three scientists involved in the Californian Department of Health Services (DHS) EMF Program reported: "to one degree or another they are inclined to believe that EMFs do not cause an increased risk of breast cancer". (Executive Summary

of the California EMF Risk Evaluation For Policymakers And the Public, The California Department of Health Services, June 2002).

We will never know what specific ELF EMF fields the breast cancer victims were exposed to. The impact of the loss of more detailed ELF EMF information in regard to this breast cancer cluster is enormous.

More detailed ELF EMF information from this particular breast cancer cluster may have revealed why there have been inconsistencies in studies and highlighted which are the more damaging aspects in relation to different diseases.

The graphs provided by ARPANSA

in their report provide evidence of spikes and more detailed information could have also revealed that bursts of electromagnetic radiation (high frequency transients) - 'dirty electricity' - also played a part in creating this breast cancer cluster.

As far back as 1997 it was observed that: "The results of the Probe Experiment are consistent with other indications suggesting that transients produced by rapid electric and/or magnetic field onset/offset might be a critical feature producing melatonin suppression". Henshaw & Reiter (2005) found that effects on melatonin disruption were more pronounced when switching or transients of magnetic fields were present which concurred with other findings.

REFERENCES:

Sage in Carpenter and Sage (eds) 2007, p.6
Sage in Carpenter and Sage (eds) 2007, p.21
Sage in Carpenter and Sage (eds) 2007, p.22
Sage in Carpenter and Sage (eds) 2007, p.19
Sage in Carpenter and Sage (eds) 2007 p.19
Benke in Armstrong 2006, p.12
Armstrong 2006, p.12

Armstrong 2006, p.13

Armstrong 2006, p.13

abc.net.au/austory/content/2007/s1876734.htm 2007, p.6

abc.net.au/austory/content/2007/s1876734.htm 2007, p.6 Judy Kennedy

abc.net.au/austory/content/2007/s1876734.htm 2007, p.6

Rogers, Reiter, Orr in Stevens, Wilson, Anderson, ed, 1997, p.463



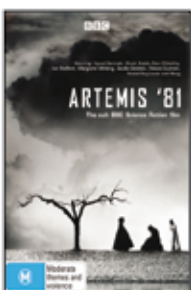
Australian Atomic Confessions

In this disturbing documentary, Australian servicemen and nomadic aboriginals reveal the devastating effects of British atomic weapons testing carried out in Australia in the 1950s. For the first time, members of the Royal Australian Army, Navy, and Air force describe former top secret aspects of those tests. With the use of rare archival film and photographs, as well as eyewitness accounts, Australian Atomic Confessions chronicles the hidden history of these tests and also exposes previously unknown government cover-ups.

DOCUMENTARY

DVD
\$24.95
plus P.H

Code DV1-198680



Artemis 81

On their home world, the alien angel Helith and his evil brother Asrael wage war over the future of humanity.

On Earth, a pagan relic is stolen and the passengers on a North Sea car ferry on which it is being transported all later commit suicide; musician Von Drachenfels is haunted by the idea that he is cursed to bring about the end of the world; and horror novelist Gideon Harlax finds himself drawn into the increasingly complex plot.

DOCUMENTARY

DVD
\$29.95
plus P.H

Code DV1R-B01537-9



Secrets Of The Code

Based on the best-seller of the same name Secrets Of The Code is a film that no fan of The Da Vinci Code can afford to miss. The film takes the viewer on a journey to uncover the mysteries buried deep in history. As we are guided through the ancient catacombs of Rome and discover secrets hidden in the prehistoric caves of France religion and history experts take over where The Da Vinci Code left off answering questions that will help shape our beliefs in the past and our understandings of the origins of Christianity.

DOCUMENTARY

DVD
\$29.95
plus P.H

Code EAG 9327
031006049